

Chain Lubrication Device COBRA 1 X



Market requirements: simple and favorable in price
easy to install
for standard P&F chains
with minimum controlling requirement

Cobra 501: complex design
“over-performed“ for standard chains
small batch sizes – high costs

Cobra 1D: high injecting pressure
construction is too heavy and too costly

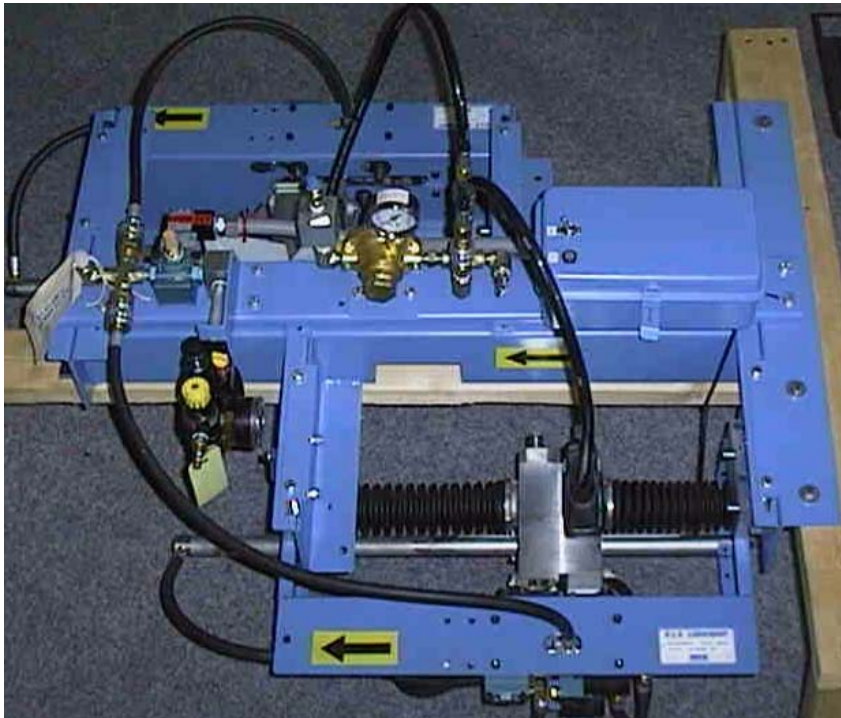
Tarket markets: chain manufacturers (J. V. Webb)
 system manufacturers (Eisenmann, Dürr)
 end customers (Daimler Chrysler, VW, Audi)

Competitors: OPCO Chainmaster
 VOGEL Mecafluid

Competitors



OPCO OP 201, Lubriquip



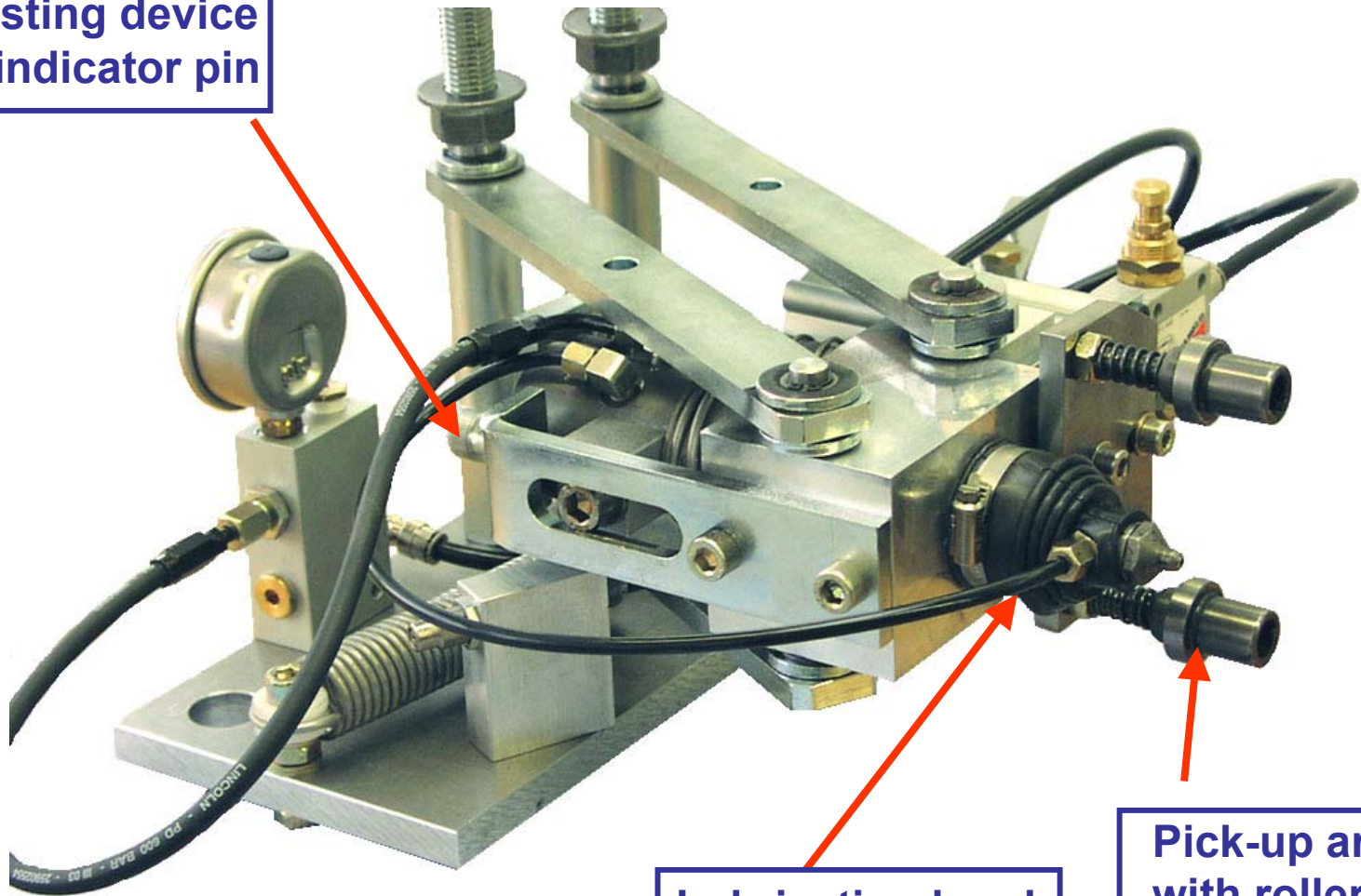
Mecafluid



Chain Lubrication Device COBRA 1 X



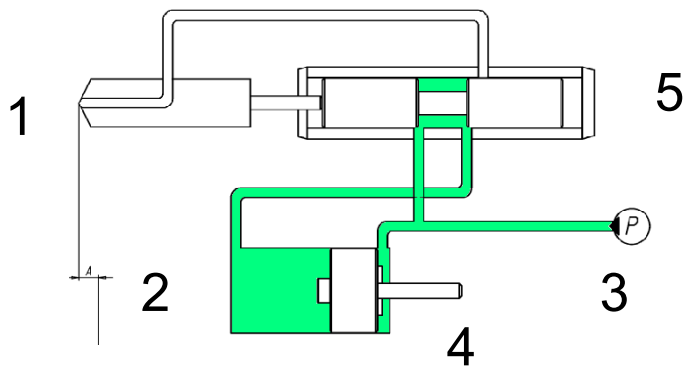
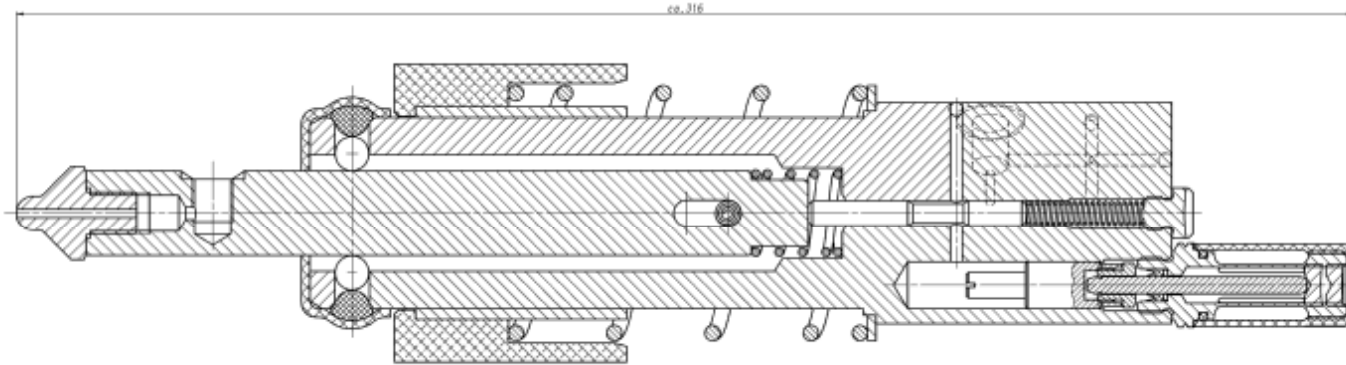
Adjusting device
and indicator pin



Lubrication head

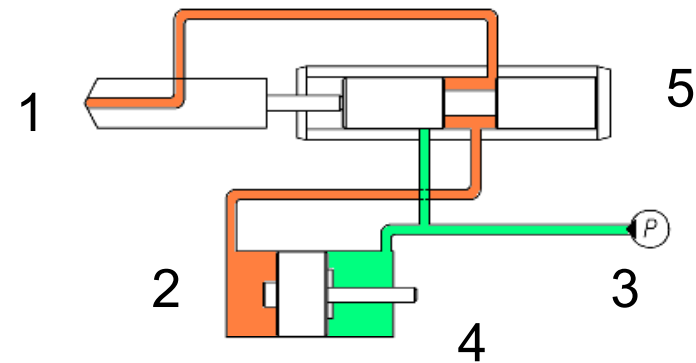
Pick-up arm
with rollers

Lubrication Head, adjustable



Ready for operation

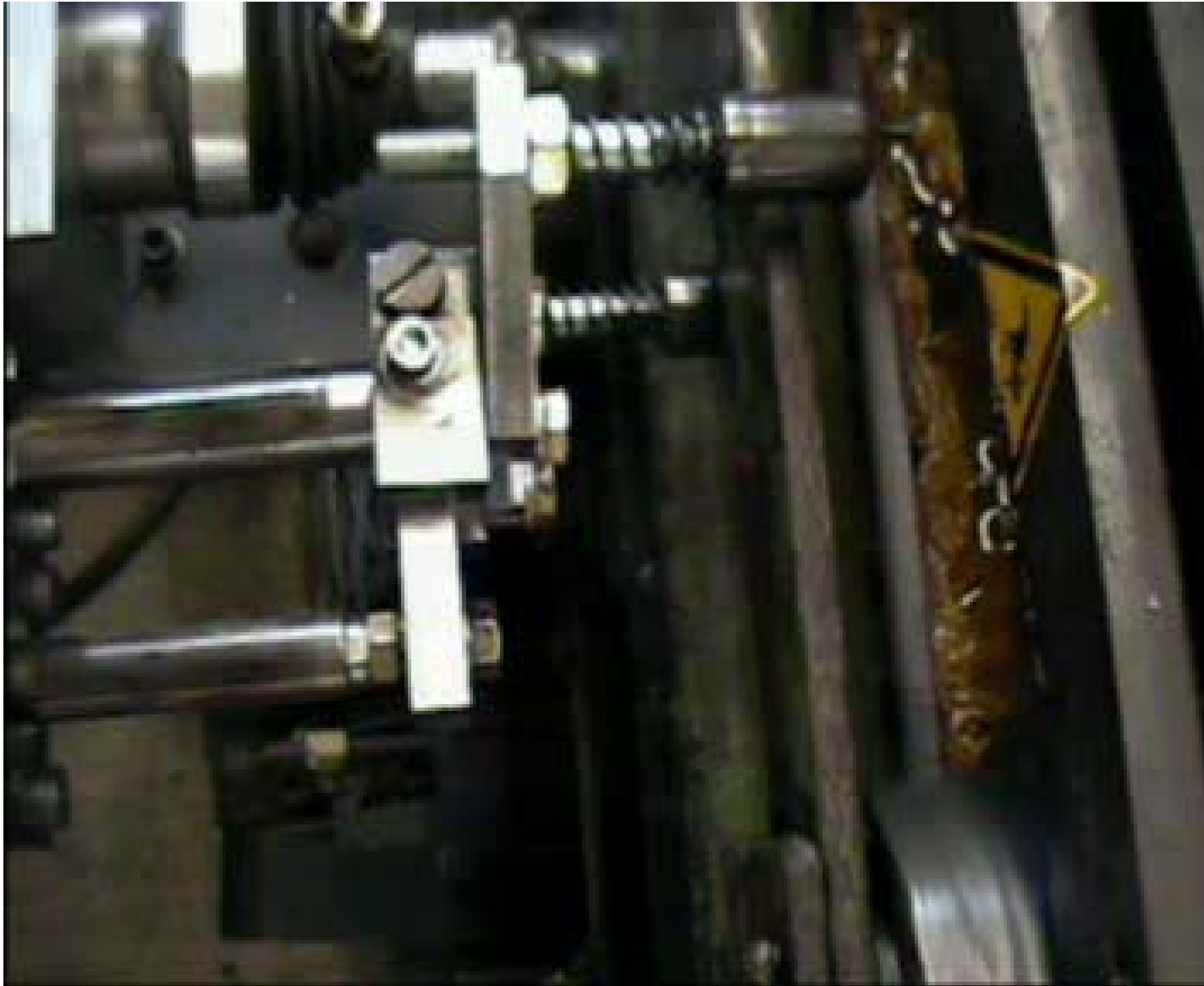
- 1 Nozzle coupler
- 2 Metering piston



Lubricating procedure

- 3 Pump
- 4 Indicator pin
- 5 Control piston

Chain Lubrication Device COBRA 1 X



- Pneumatically and mechanically operated
- New concept of the lubrication head with adjustable output

Technical data:

Lubricating frequency: 1 cycle/ s (more cycles on request)

Lubricant pressure

on the lubrication fitting: **max. 150 bar**

Output: **0.2 - 2 cm³/ stroke, adjustable**

Chain speed: 20 m/ min (higher speed on request)

Start / Stop: Standard: hand-operated

Option: automatic (electro-pneumatic)

Lubricant: Oil or grease up to NLGI grade 2

Monitoring: Standard: visually via indicator pin

Option: electrically via proximity switch

Switch box: not required for the standard version