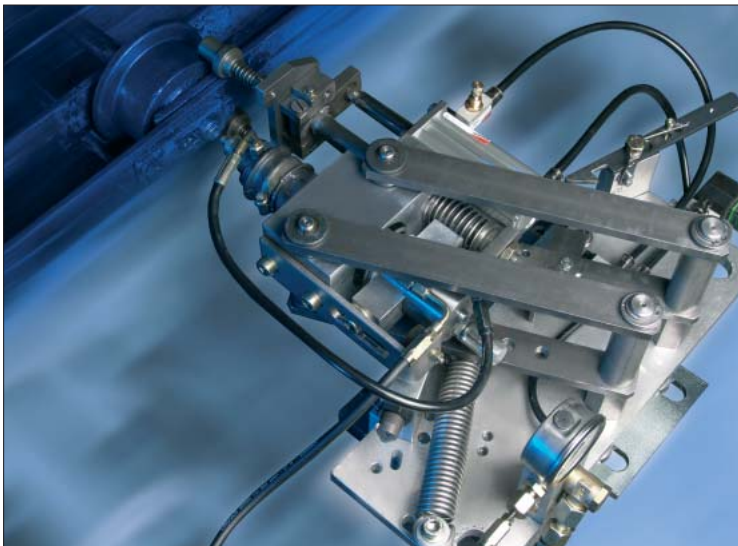


The New Generation of Chain Lubrication



Cobra 1X – For the lubrication of heavy-duty chains with grease or oil

- New drive technology reduces load on the chain
- Enhanced lubrication head with higher lubricant pressure
- Lubricant quantity is infinitely adjustable
- Easier, maintenance-friendlier system setup

PMA2 – Solenoid pump for contact-free oil lubrication of chains

- Greater capacity with 6 lubricant outlets
- New double-nozzle increases the maximum number of outlets to 12
- Fast pulse time



The New Generation of Chain Lubrication

Cobra 1X – For the lubrication of heavy-duty chains with grease or oil

The enhanced Cobra 1X from Lincoln's chain lubrication range is particularly suitable for conveyor chains and conveyor lines. The system can supply either NLGI class 2 grease or oil.

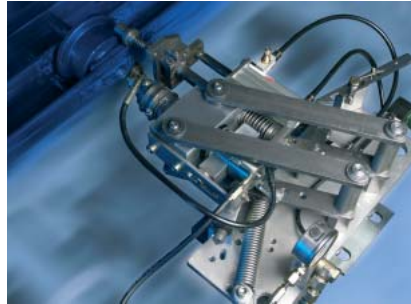
The new drive technology, which is a combination of a pneumatic and mechanical drive, as well as a newly designed lubrication head, provides two key advantages:

- The load subjected to the chain is substantially lower
- A higher maximum lubricant pressure of up to 150 bar is possible

The newly designed lubrication head enables an exact metering from 0.2 cm³ to 2 cm³ per lubrication cycle, and the adjusting screw permits infinite metering adjusting within this range. Visual monitoring of the lubrication head function is performed via the movement of an indicator pin.

System Benefits

- For oil and grease up to NLGI class 2
- Lubrication frequency of 1 cycle per second.
- Supply quantity of 0.2 cm³ to 2 cm³ per stroke
- Lubricant pressure of max. 150 bar
- For chain speeds up to 20 m/min
- Manual Start/Stop or optional automatic (electro pneumatic)
- Optical monitoring via indicator pin
- No control cabinet required (for the standard version)



Cobra 1x

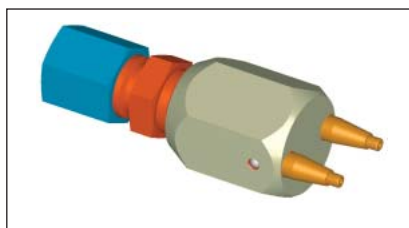
PMA 2 – Solenoid pump for contact-free oil lubrication of chains

The new solenoid pump PMA 2 has been specially designed for the contact-free oil lubrication of chains. Lubrication is effected with an exactly metered oil volume while the chain is running.

The lubricant can also be applied directly by means of brushes to lubrication points.

Compared to the predecessor model, the pump offers some essential improvements. The increase of the pulse frequency to a maximum of 5 hertz, for example, allows for a trouble-free lubrication also of fast-running chains. Now, 6 instead of formerly 4 outlets contribute to a decisive improvement of the pump's capacity.

In addition to the standard nozzle, there is now a newly developed double-nozzle with two outlets, thus further increasing the pump's capacity.



Double-nozzle

The metering is 30 mm³ or 60 mm³ of oil per lubrication cycle just like the predecessor model.

Further, a new solenoid with higher capacity and longer duty cycle enables the pump to operate reliably also under severe conditions.

Now, the pump is also available in a new 120 V AC version. Optionally, we offer electric monitoring via proximity switch.

A 13-liter reservoir and a 36-liter reservoir for oil complement the scope of accessories. Both reservoirs dispose of an electric low-level control and are provided with a large filler opening with strainer.

With its new slim design the PMA 2 has become even more attractive – also with regard to its price!



PMA 2

System Benefit

- Metering volume 30 mm³ or 60 mm³ of oil per lubrication cycle
- Available in 24 V DC, 230 V AC and 120 V AC versions
- Electric monitoring via proximity switch as an option
- 1 to 6 outlets
- A maximum of up to 5 lubrication cycles per second (depending on the type of system)